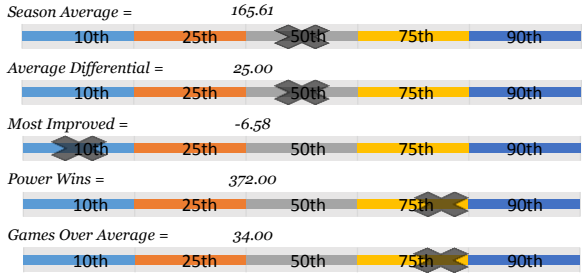


Steve D.

Bowler's Dashboard  
RENO LEAGUE  
2015/2016  
Results as of WK26



PERFORMANCE MEASURE



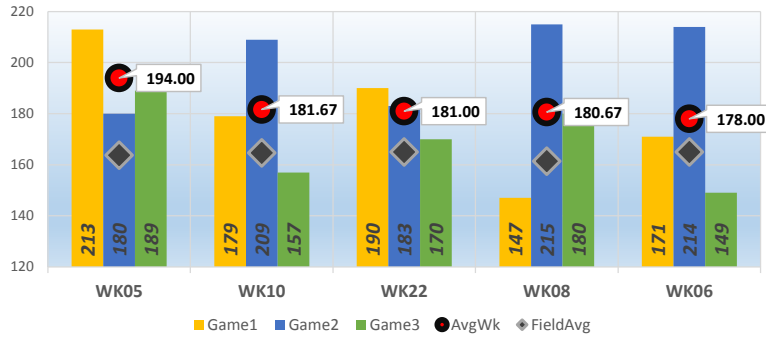
Season Average 165.61

Avg Differential 4.99

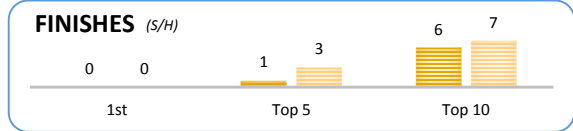
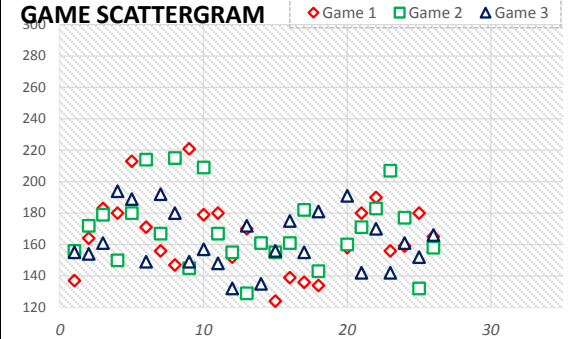
OverAvg (%) 0.453

PowerWin (%) 0.487

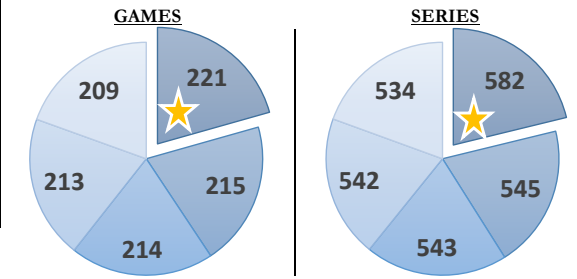
**15**  
BOWLER of the YEAR



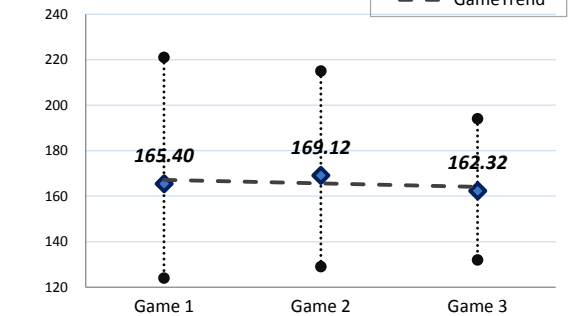
www.bowlerstats.com/statsheet/renoleague/Steve\_D.pdf



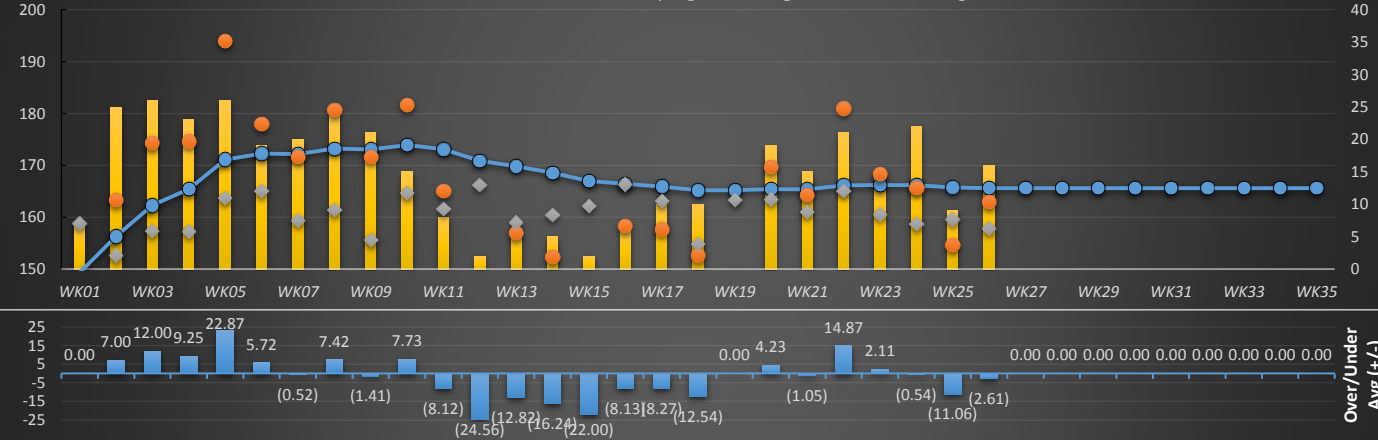
TOP GAMES/SERIES



GAME AVERAGE

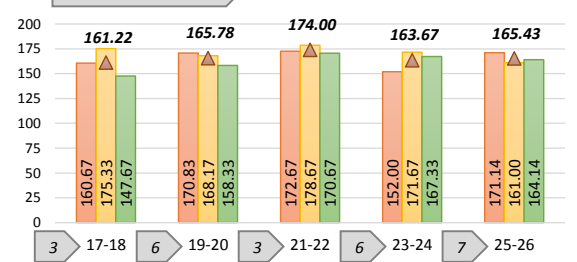


WEEKLY ANALYSIS



Last 5 Wks	Avg	Game 1	Game 2	Game 3	Series	Avg +/-	Change	AvgDiff	#OverAvg	PwrWins	Sch/Hdcp	Lane	GM Trend
WK22	166.13	190	183	170	543	14.87	0.74	15.97	3	21.0	10 / 10	19-20	
WK23	166.23	156	207	142	505	2.11	0.10	7.85	1	15.0	10 / 13	17-18	
WK24	166.20	159	177	161	497	(0.54)	(0.02)	7.00	1	22.0	12 / 10	21-22	
WK25	165.72	180	132	152	464	(11.06)	(0.48)	-4.91	1	9.0	14 / 20	25-26	
WK26	165.61	165	158	166	489	(2.61)	(0.11)	5.10	1	16.0	12 / 16	17-18	
<b>Avg (5WK)</b>	165.98	170.00	171.40	158.20	499.60	0.55	0.05	6.20	1.40	16.6	11 / 13		
<b>vs. Current</b>	-0.67	4.60	2.28	-4.12	2.76	2.08	-2.55	1.21	-0.15	1.72	2 / 2		

LANE PERFORMANCE



Current Week = WK26																			
*Week#	*Game1	*Game2	*Game3	*Series(S)	*AvgCurr	*AvgUsed	*+/- Avg	*AvgDiff	*GmsOver	*Pwr(S)	*Pwr(H)	*Place(S)	*Place(H)	(S) / (H)	*Lane	Pair	FieldAvg	AvgChg	RANK
WK01	137	156	155	448	149.33	149.33	▲ 0.00	(9.42)	2	8	7	18	19	18 / 19	20	19-20	158.76		23
WK02	164	172	154	490	163.33	156.33	▲ 7.00	10.72	2	15	25	14	4	14 / 4	23	23-24	152.61	▲ 7.00	15
WK03	183	179	161	523	174.33	162.33	▲ 12.00	17.01	2	21	26	9	4	9 / 4	25	25-26	157.32	▲ 6.00	7
WK04	180	150	194	524	174.67	165.42	▲ 9.25	17.43	2	20	23	9	6	9 / 6	22	21-22	157.24	▲ 3.08	6
WK05	213	180	189	582	194.00	171.13	▲ 22.87	30.28	3	24	26	5	3	5 / 3	26	25-26	163.72	▲ 5.72	1
WK06	171	214	149	534	178.00	172.28	▲ 5.72	12.95	1	19	19	13	13	13 / 13	19	19-20	165.05	▲ 1.14	5
WK07	156	167	192	515	171.67	172.19	▼ (0.52)	12.29	1	18	20	12	11	12 / 11	25	25-26	159.38	▼ (0.09)	8
WK08	147	215	180	542	180.67	173.25	▲ 7.42	19.23	2	21	24	11	8	11 / 8	23	23-24	161.44	▲ 1.06	4
WK09	221	145	149	515	171.67	173.07	▼ (1.41)	16.09	1	23	21	12	14	12 / 14	19	19-20	155.58	▼ (0.18)	9
WK10	179	209	157	545	181.67	173.93	▲ 7.73	16.96	2	21	15	9	13	9 / 13	21	21-22	164.71	▼ 0.86	2
WK11	180	167	148	495	165.00	173.12	▼ (8.12)	3.43	1	19	8	13	23	13 / 23	24	23-24	161.57	▼ (0.81)	13
WK12	152	155	132	439	146.33	170.89	▼ (24.56)	(19.84)	0	9	2	21	28	21 / 28	25	25-26	166.18	▼ (2.23)	24
WK13	170	129	172	471	157.00	169.82	▼ (12.82)	(1.97)	2	17	6	14	24	14 / 24	19	19-20	158.97	▼ (1.07)	19
WK14	161	161	135	457	152.33	168.57	▼ (16.24)	(8.02)	0	13	5	16	24	16 / 24	17	17-18	160.36	▼ (1.25)	22
WK15	124	155	156	435	145.00	167.00	▼ (22.00)	(17.18)	0	8	2	20	26	20 / 26	23	23-24	162.18	▼ (1.57)	25
WK16	139	161	175	475	158.33	166.46	▼ (8.13)	(7.96)	1	9	6	19	22	19 / 22	24	23-24	166.30	▼ (0.54)	17
WK17	136	182	155	473	157.67	165.94	▼ (8.27)	(5.51)	1	15	10	15	19	15 / 19	20	19-20	163.18	▼ (0.52)	18
WK18	134	143	181	458	152.67	165.20	▼ (12.54)	(2.25)	1	15	10	17	21	17 / 21	26	25-26	154.92	▼ (0.74)	21
WK19					165.20												163.29		
WK20	158	160	191	509	169.67	165.44	▲ 4.23	6.22	1	17	19	14	12	14 / 12	24	23-24	163.45	▼ 0.23	10
WK21	180	171	142	493	164.33	165.38	▼ (1.05)	3.31	2	15	15	17	17	17 / 17	25	25-26	161.02	▼ (0.06)	14
WK22	190	183	170	543	181.00	166.13	▲ 14.87	15.97	3	21	21	10	10	10 / 10	20	19-20	165.03	▼ 0.74	3
WK23	156	207	142	505	168.33	166.23	▲ 2.11	7.85	1	18	15	10	13	10 / 13	18	17-18	160.49	▼ 0.10	11
WK24	159	177	161	497	165.67	166.20	▼ (0.54)	7.00	1	20	22	12	10	12 / 10	22	21-22	158.67	▼ (0.02)	12
WK25	180	132	152	464	154.67	165.72	▼ (11.06)	(4.91)	1	14	9	14	20	14 / 20	26	25-26	159.57	▼ (0.48)	20
WK26	165	158	166	489	163.00	165.61	▼ (2.61)	5.10	1	20	16	12	16	12 / 16	17	17-18	157.90	▼ (0.11)	16
WK27					165.61														
WK28					165.61														
WK29					165.61														
WK30					165.61														
WK31					165.61														
WK32					165.61														
WK33					165.61														
WK34					165.61														
WK35					165.61														
<b>Average</b>	<b>165.40</b>	<b>169.12</b>	<b>162.32</b>	<b>496.84</b>	<b>165.61</b>	<b>166.65</b>	<b>(1.53)</b>	<b>4.99</b>	<b>1.55</b>	<b>16.80</b>	<b>14.88</b>	<b>13.44</b>	<b>15.20</b>	<b>13 / 15</b>			<b>160.73</b>	<b>2.59</b>	

GamesOver%= 45.33% PwrWin%= 48.73%

**Game by Game, Pair by Pair**

	High	Low	Avg	Last 5	17-18	19-20	21-22	23-24	25-26
Game 1	221.00	124.00	165.40	170.00	160.67	170.83	172.67	152.00	171.14
Game 2	215.00	129.00	169.12	171.40	175.33	168.17	178.67	171.67	161.00
Game 3	194.00	132.00	162.32	158.20	147.67	158.33	170.67	167.33	164.14
Average	173.93	149.33	165.61	166.53	161.22	165.78	174.00	163.67	165.43
Bowled					3	6	3	6	7

**Top 5 Weeks**

Top 5	Games	Series	Week	Game1	Game2	Game3	AvgWk	Average	Field Avg
1st	221	582	WK05	213	180	189	194.00	171.13	163.72
2nd	215	545	WK10	179	209	157	181.67	173.93	164.71
3rd	214	543	WK22	190	183	170	181.00	166.13	165.03
4th	213	542	WK08	147	215	180	180.67	173.25	161.44
5th	209	534	WK06	171	214	149	178.00	172.28	165.05

**Top Finishes**

Finishes	Scratch	Handicap
1st	0	0
Top 5	1	3
Top 10	6	7
Top 15	18	13

**Last 5 Weeks**

WK	Scratch	Hdcp
WK22	10	10
WK23	10	13
WK24	12	10
WK25	14	20
WK26	12	16
5 wk avg	11	13
Current	13	15
Difference	2	2

**Bowler of the Year**

Criteria#	Points	Totals
*POY* 1	420	Total Pts 895.1143
*POY* 2	372	Behind -801.1866
*POY* 3	-32.88571	POY Rank 15
*POY* 4	58	
*POY* 5	78	