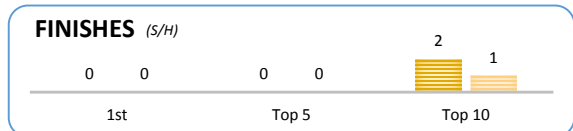
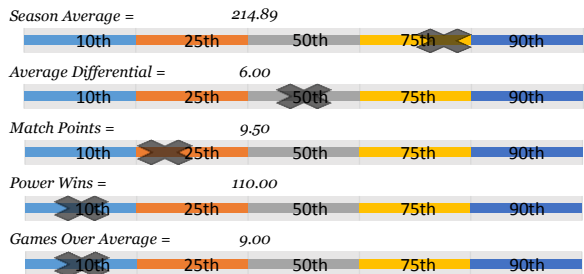


Tyvon W.

Bowler's Dashboard
BUSINESSMEN
 2015/2016
 Results as of WK32

PERFORMANCE MEASURE



Season Average: 214.89

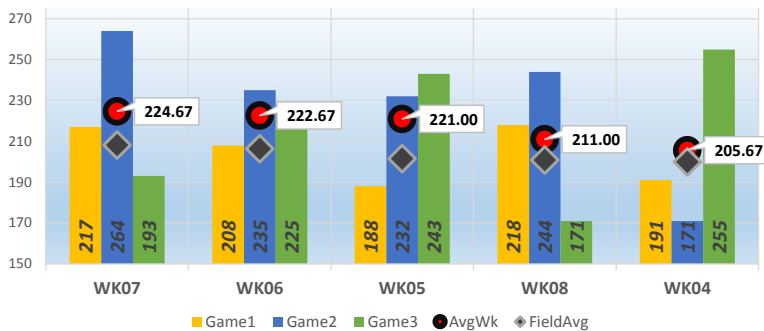
Avg Differential: 10.75

OverAvg (%): 0.500

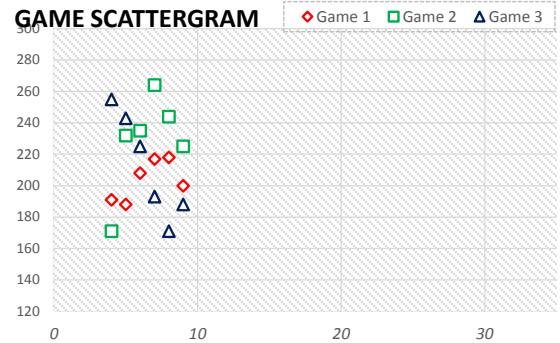
PowerWin (%): 0.490

44

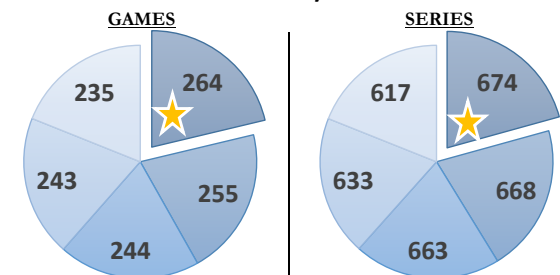
BOWLER of the YEAR



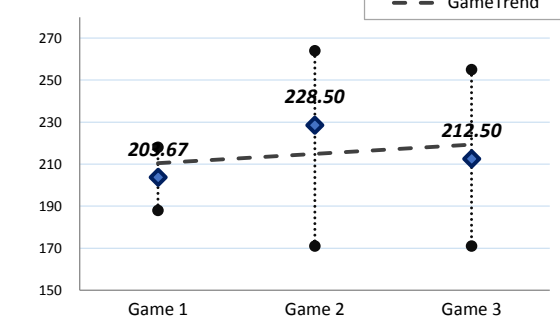
www.bowlerstats.com/statsheet/businessmen/Tyvon_W.pdf



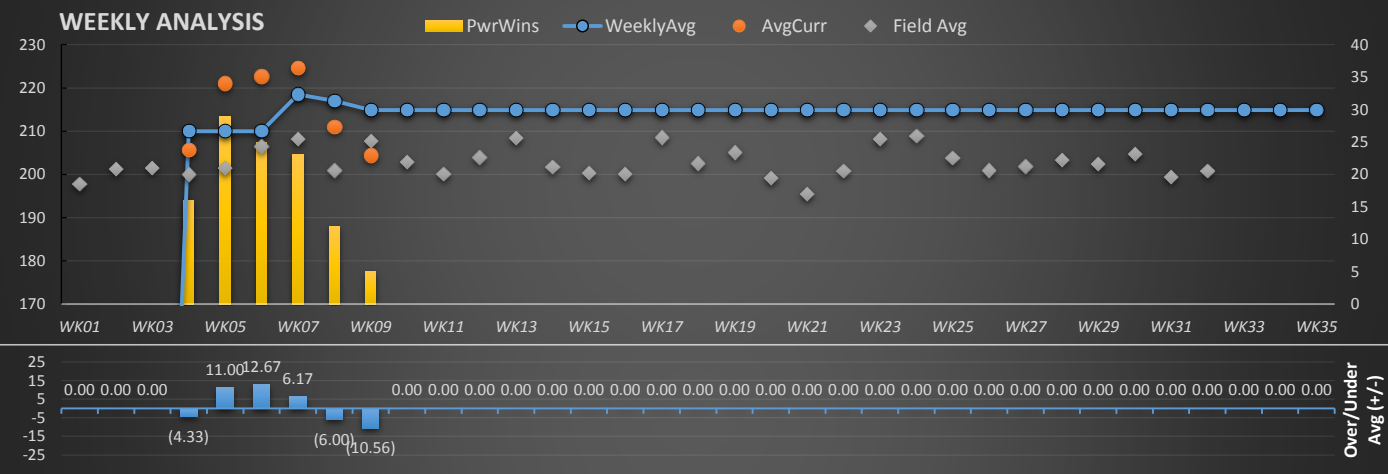
TOP GAMES/SERIES



GAME AVERAGE

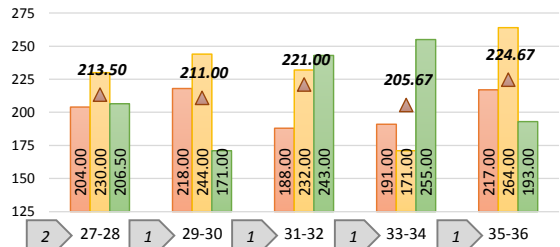


WEEKLY ANALYSIS



Last 5 Wks	Avg	Game 1	Game 2	Game 3	Series	Avg +/-	Change	AvgDiff	#OverAvg	PwrWins	Sch/Hdcp	Lane	GM Trend
WK28	214.89						↑ 0.00				/		→
WK29	214.89						↑ 0.00				/		→
WK30	214.89						↑ 0.00				/		→
WK31	214.89						↑ 0.00				/		→
WK32	214.89						↑ 0.00				/		→
Avg (5WK)	214.89						↑ 0.00						→
vs. Current	△ 0.28	#VALUE!	#VALUE!	#VALUE!	#VALUE!	#VALUE!	△ 0.28	#VALUE!	#VALUE!	#VALUE!	#VALUE!		→

LANE PERFORMANCE



Current Week = WK32																				
*Week#	*Game1	*Game2	*Game3	*Series(S)	*AvgCurr	*AvgUsed	*+/- Avg	*AvgDiff	*GmsOver	*Pwr(S)	*Pwr(H)	*Place(S)	*Place(H)	(S) / (H)	*Lane	Pair	FieldAvg	AvgChg	RANK	
WK01														/			197.77			
WK02														/			201.33			
WK03														/			201.56			
WK04	191	171	✓ 255	617	205.67	210.00	▼ (4.33)	5.71	1	20	16	18	22	18 / 22	33	33-34	199.96		5	
WK05	188	232	243	663	221.00	210.00	▲ 11.00	19.46	2	30	29	★ 7	★ 8	7 / 8	31	31-32	201.54		3	
WK06	208	235	225	668	222.67	210.00	▲ 12.67	16.22	2	25	25	☆ 12	☆ 12	12 / 12	28	27-28	206.45		2	
WK07	217	✓ 264	193	674	224.67	218.50	▲ 6.17	16.45	1	28	23	★ 10	☆ 15	10 / 15	36	35-36	208.22	▲ 8.50	1	
WK08	218	244	171	633	211.00	217.00	▼ (6.00)	10.08	2	18	12	19	25	19 / 25	29	29-30	200.92	▼ (1.50)	4	
WK09	200	225	188	613	204.33	214.89	▼ (10.56)	(3.39)	1	16	5	22	33	22 / 33	27	27-28	207.72	▼ (2.11)	6	
WK10					214.89									/			202.91			
WK11					214.89									/			200.12			
WK12					214.89									/			203.89			
WK13					214.89									/			208.36			
WK14					214.89									/			201.66			
WK15					214.89									/			200.35			
WK16					214.89									/			200.14			
WK17					214.89									/			208.59			
WK18					214.89									/			202.54			
WK19					214.89									/			205.09			
WK20					214.89									/			199.15			
WK21					214.89									/			195.40			
WK22					214.89									/			200.71			
WK23					214.89									/			208.12			
WK24					214.89									/			209.00			
WK25					214.89									/			203.85			
WK26					214.89									/			200.92			
WK27					214.89									/			201.86			
WK28					214.89									/			203.38			
WK29					214.89									/			202.38			
WK30					214.89									/			204.71			
WK31					214.89									/			199.50			
WK32					214.89									/			200.83			
WK33					214.89									/						
WK34					214.89									/						
WK35					214.89									/						
Average	203.67	228.50	212.50	644.67	214.89	214.61	1.49	10.75	1.50	22.83	18.33	14.67	19.17	14 / 19	30.67		202.78	(0.28)		
	0	0	0				GamesOver%=	50.00%	PwrWin%=	49.03%										

Game by Game, Pair by Pair

	High	Low	Avg	Last 5	27-28	29-30	31-32	33-34	35-36
Game 1	218.00	188.00	203.67		204.00	218.00	188.00	191.00	217.00
Game 2	264.00	171.00	228.50		230.00	244.00	232.00	171.00	264.00
Game 3	255.00	171.00	212.50		206.50	171.00	243.00	255.00	193.00
Average	218.50	210.00	214.89	#VALUE!	213.50	211.00	221.00	205.67	224.67
Bowled					2	1	1	1	1

Top 5 Weeks

Top 5	Games	Series	Week	Game1	Game2	Game3	AvgWk	Average	Field Avg
1st	264	674	WK07	217	264	193	224.67	218.50	208.22
2nd	255	668	WK05	208	235	225	222.67	210.00	206.45
3rd	244	663	WK06	188	232	243	221.00	210.00	201.54
4th	243	633	WK08	218	244	171	211.00	217.00	200.92
5th	235	617	WK04	191	171	255	205.67	210.00	199.96

Top Finishes

Finishes	Scratch	Handicap
1st	0	0
Top 5	0	0
Top 10	2	1
Top 15	3	3

Last 5 Weeks

WK	Scratch	Hdcp
WK28	#VALUE!	#VALUE!
WK29	#VALUE!	#VALUE!
WK30	#VALUE!	#VALUE!
WK31	#VALUE!	#VALUE!
WK32	#VALUE!	#VALUE!
5 wk avg	#DIV/0!	#DIV/0!
Current	14	19
Difference	#DIV/0!	#DIV/0!

Bowler of the Year

Criteria#	Points	Totals
POY 1	137	Total Pts 315.5
POY 2	110	Behind -2327
POY 3	47.5	POY Rank 44
POY 4	13	
POY 5	8	