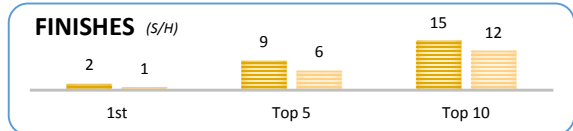
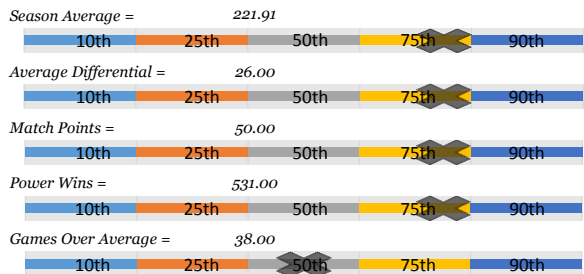


Tom H.

Bowler's Dashboard
BUSINESSMEN
2015/2016
Results as of WK32

PERFORMANCE MEASURE



Season Average

221.91

OverAvg (%)

0.487

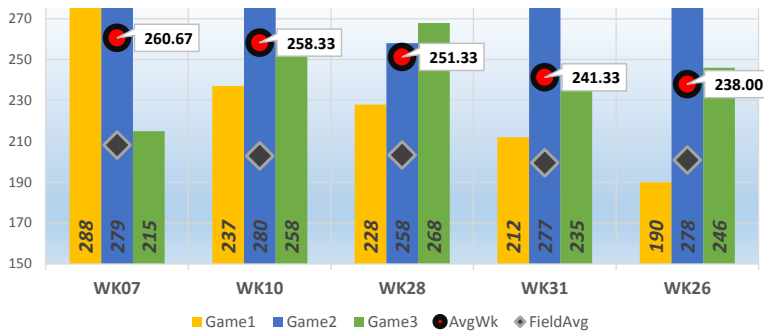


Avg Differential

18.72

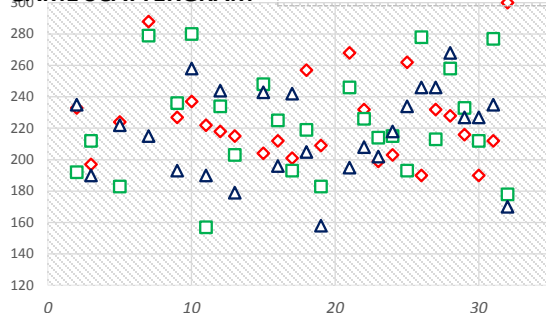
PowerWin (%)

0.548

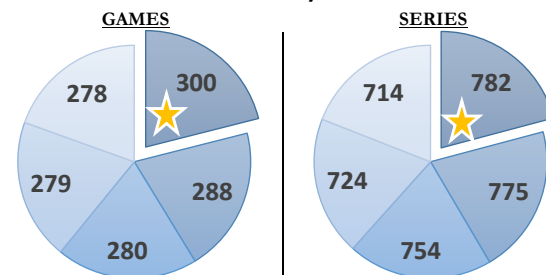


www.bowlerstats.com/statsheet/businessmen/Tom_H.pdf

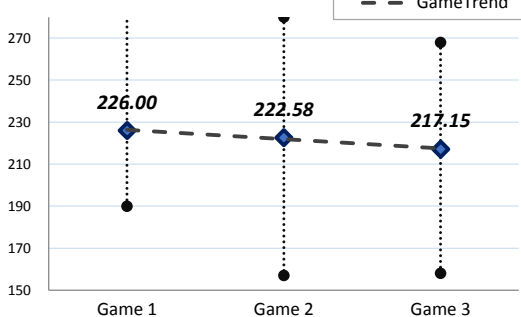
GAME SCATTERGRAM



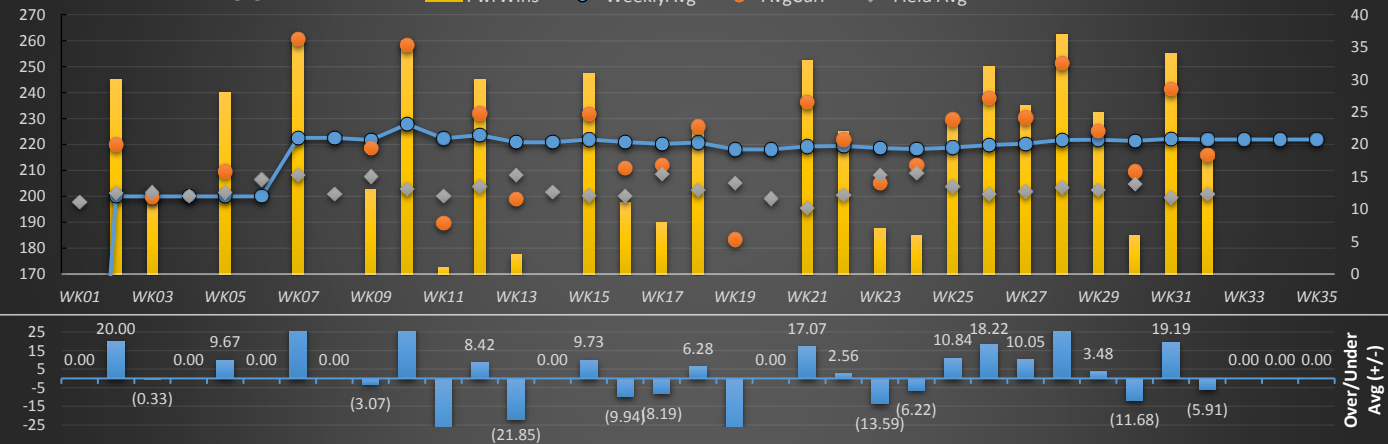
TOP GAMES/SERIES



GAME AVERAGE

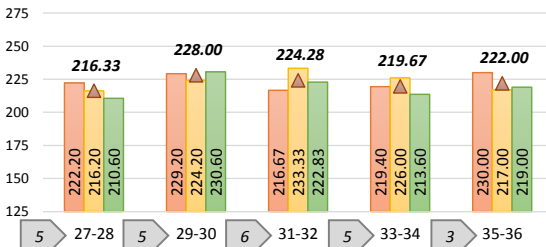


WEEKLY ANALYSIS



Last 5 Wks	Avg	Game 1	Game 2	Game 3	Series	Avg +/-	Change	AvgDiff	#OverAvg	PwrWins	Sch/Hdcp	Lane	GM Trend
WK28	221.70	228	258	268	754	29.64	↑ 1.41	47.95	3	37.0	3 / 2	27-28	↗
WK29	221.86	216	233	227	676	3.48	↑ 0.16	22.96	2	25.0	5 / 13	35-36	↗
WK30	221.35	190	212	227	629	(11.68)	↓ (0.51)	4.96	1	6.0	20 / 32	31-32	↘
WK31	222.15	212	277	235	724	19.19	↑ 0.80	41.83	2	34.0	3 / 4	29-30	↗
WK32	221.91	300	178	170	648	(5.91)	↓ (0.24)	15.17	1	18.0	10 / 19		↘
Avg (5WK)	221.79	229.20	231.60	225.40	686.20	6.94	↑ 0.32	26.57	1.80	24.0	8 / 14		↗
vs. Current	3.81	3.20	9.02	8.25	20.47	3.65	↑ 4.26	7.86	-0.01	2.76	3 / 2		↗

of weeks on pair LANE PERFORMANCE



WK32		Current Week = WK32																				
*Week#	*Game1	*Game2	*Game3	*Series(S)	*AvgCurr	*AvgUsed	*+/- Avg	*AvgDiff	*GmsOver	*Pwr(S)	*Pwr(H)	*Place(S)	*Place(H)	(S) / (H)	*Lane	Pair	FieldAvg	AvgChg	RANK			
WK01														/			197.77					
WK02	233	192	235	660	220.00	200.00	▲ 20.00	18.67	2	30	30	★ 9	★ 8	9 / 8	29	29-30	201.33	-	14			
WK03	197	212	190	599	199.67	200.00	▼ (0.33)	(1.89)	1	14	12	★ 23	★ 25	23 / 25	32	31-32	201.56	-	23			
WK04						200.00								/			199.96	-				
WK05	224	183	222	629	209.67	200.00	▲ 9.67	8.13	2	24	28	★ 13	★ 9	13 / 9	34	33-34	201.54	-	20			
WK06						200.00								/			206.45	-				
WK07	✓ 288	✓ 279	215	✓ 782	260.67	222.50	▲ 38.17	52.45	2	37	36	★ 1	★ 2	1 / 2	31	31-32	208.22	↑ 22.50	1			
WK08						222.50								/			200.92	-				
WK09	227	236	193	656	218.67	221.73	▼ (3.07)	10.95	2	26	13	★ 12	★ 23	12 / 23	33	33-34	207.72	↓ (0.77)	15			
WK10	237	✓ 280	✓ 258	✓ 775	258.33	227.83	▲ 30.50	55.42	3	36	36	★ 1	★ 1	1 / 1	27	27-28	202.91	↑ 6.10	2			
WK11	222	157	190	569	189.67	222.38	▼ (32.71)	(10.46)	0	14	1	★ 24	★ 37	24 / 37	27	27-28	200.12	↓ (5.45)	25			
WK12	218	234	244	696	232.00	223.58	▲ 8.42	28.11	2	34	30	★ 4	★ 8	4 / 8	32	31-32	203.89	↑ 1.20	7			
WK13	215	203	179	597	199.00	220.85	▼ (21.85)	(9.36)	0	11	3	★ 25	★ 33	25 / 33	28	27-28	208.36	↓ (2.73)	24			
WK14						220.85								/			201.66	-				
WK15	204	248	243	695	231.67	221.93	▲ 9.73	31.32	2	32	31	★ 6	★ 7	6 / 7	31	31-32	200.35	↑ 1.08	8			
WK16	212	225	196	633	211.00	220.94	▼ (9.94)	10.86	1	21	11	★ 16	★ 25	16 / 25	35	35-36	200.14	↓ (0.99)	19			
WK17	201	193	242	636	212.00	220.19	▼ (8.19)	3.41	1	21	8	★ 14	★ 27	14 / 27	30	29-30	208.59	↓ (0.74)	17			
WK18	✓ 257	219	205	681	227.00	220.72	▲ 6.28	24.46	1	25	22	★ 9	★ 12	9 / 12	34	33-34	202.54	↓ 0.52	11			
WK19	209	183	158	550	183.33	218.05	▼ (34.71)	(21.76)	0	6	0	★ 30	★ 36	30 / 36	27	27-28	205.09	↓ (2.67)	26			
WK20						218.05								/			199.15	-				
WK21	✓ 268	246	195	✓ 709	236.33	219.27	▲ 17.07	40.93	2	35	33	★ 3	★ 5	3 / 5	29	29-30	195.40	↑ 1.22	6			
WK22	232	226	208	666	222.00	219.44	▲ 2.56	21.29	2	30	22	★ 10	★ 16	10 / 16	0		200.71	↓ 0.17	13			
WK23	199	214	202	615	205.00	218.59	▼ (13.59)	(3.12)	0	16	7	★ 19	★ 28	19 / 28	33	33-34	208.12	↓ (0.85)	22			
WK24	203	215	218	636	212.00	218.22	▼ (6.22)	3.00	0	20	6	★ 16	★ 29	16 / 29	31	31-32	209.00	↓ (0.37)	18			
WK25	✓ 262	193	234	689	229.67	218.82	▲ 10.84	25.82	2	28	24	★ 5	★ 9	5 / 9	36	35-36	203.85	↓ 0.60	10			
WK26	190	✓ 278	246	✓ 714	238.00	219.78	▲ 18.22	37.08	2	33	32	★ 3	★ 4	3 / 4	34	33-34	200.92	↓ 0.96	5			
WK27	232	213	246	691	230.33	220.29	▲ 10.05	28.47	2	29	26	★ 7	★ 10	7 / 10	30	29-30	201.86	↓ 0.50	9			
WK28	228	✓ 258	✓ 268	✓ 754	251.33	221.70	▲ 29.64	47.95	3	36	37	★ 3	★ 2	3 / 2	27	27-28	203.38	↑ 1.41	3			
WK29	216	233	227	676	225.33	221.86	▲ 3.48	22.96	2	33	25	★ 5	★ 13	5 / 13	35	35-36	202.38	↓ 0.16	12			
WK30	190	212	227	629	209.67	221.35	▼ (11.68)	4.96	1	18	6	★ 20	★ 32	20 / 32	32	31-32	204.71	↓ (0.51)	21			
WK31	212	✓ 277	235	✓ 724	241.33	222.15	▲ 19.19	41.83	2	35	34	★ 3	★ 4	3 / 4	29	29-30	199.50	↓ 0.80	4			
WK32	✓ 300	178	170	648	216.00	221.91	▼ (5.91)	15.17	1	28	18	★ 10	★ 19	10 / 19	0		200.83	↓ (0.24)	16			
WK33						221.91								/								
WK34						221.91								/								
WK35						221.91								/								
Average	226.00	222.58	217.15	665.73	221.91	217.98	3.29	18.72	1.81	25.85	21.24	11.19	16.31	11 / 16	31.00		202.78	(3.93)				

GamesOver%= 48.72% PwrWin%= 54.81%

Game by Game, Pair by Pair

	High	Low	Avg	Last 5	27-28	29-30	31-32	33-34	35-36
Game 1	300.00	190.00	226.00	229.20	222.20	229.20	216.67	219.40	230.00
Game 2	280.00	157.00	222.58	231.60	216.20	224.20	233.33	226.00	217.00
Game 3	268.00	158.00	217.15	225.40	210.60	230.60	222.83	213.60	219.00
Average	227.83	200.00	221.91	228.73	216.33	228.00	224.28	219.67	222.00
Bowled					5	5	6	5	3

Top 5 Weeks

Top 5	Games	Series	Week	Game1	Game2	Game3	AvgWk	Average	Field Avg
1st	300	782	WK07	288	279	215	260.67	222.50	208.22
2nd	288	775	WK10	237	280	258	258.33	227.83	202.91
3rd	280	754	WK28	228	258	268	251.33	221.70	203.38
4th	279	724	WK31	212	277	235	241.33	222.15	199.50
5th	278	714	WK26	190	278	246	238.00	219.78	200.92

Top Finishes

Finishes	Scratch	Handicap
1st	2	1
Top 5	9	6
Top 10	15	12
Top 15	18	14

Last 5 Weeks

WK	Scratch	Hdcp
WK28	3	2
WK29	5	13
WK30	20	32
WK31	3	4
WK32	10	19
5 wk avg	8	14
Current	11	16
Difference	3	2

Bowler of the Year

Criteria#	Points	Totals
POY 1	672	Total Pts 1845
POY 2	531	Behind -797.5
POY 3	250	POY Rank 10
POY 4	233	
POY 5	159	