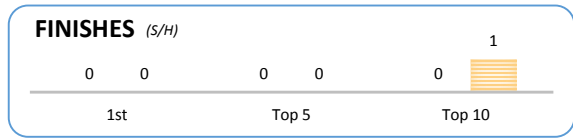
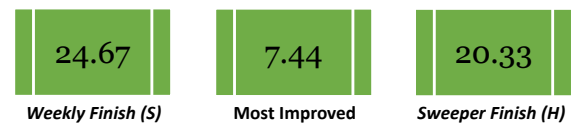
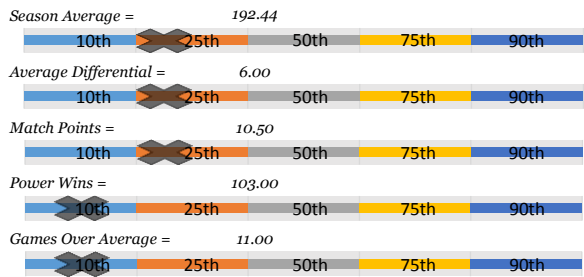


Brian E.

Bowler's Dashboard
BUSINESSMEN
2015/2016
Results as of WK32

PERFORMANCE MEASURE



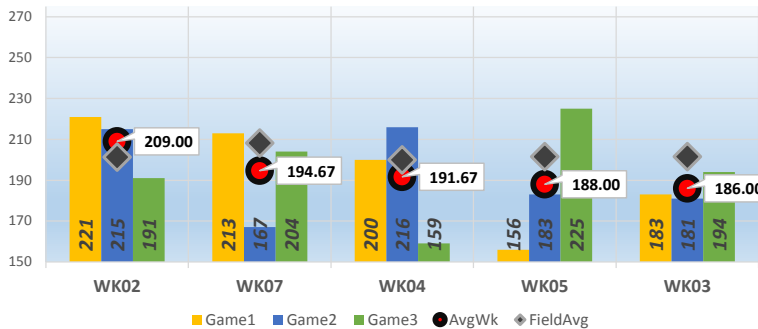
Season Average
192.44

Avg Differential
-9.28

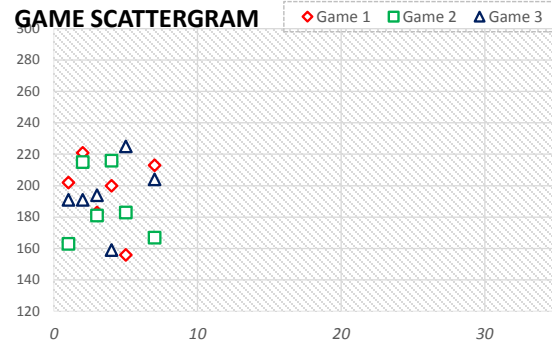
OverAvg (%)
0.611

PowerWin (%)
0.455

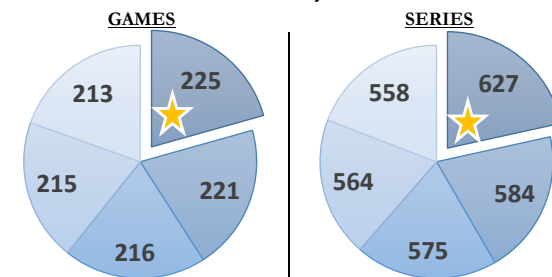
47
BOWLER of the YEAR



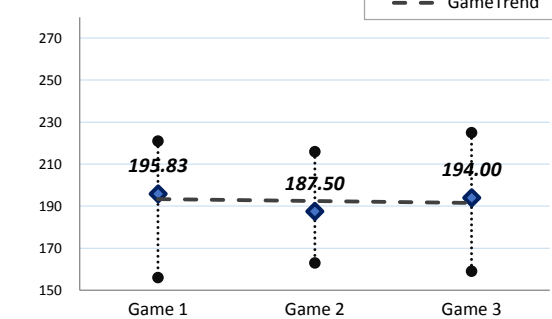
www.bowlerstats.com/statsheet/businessmen/Brian_E.pdf



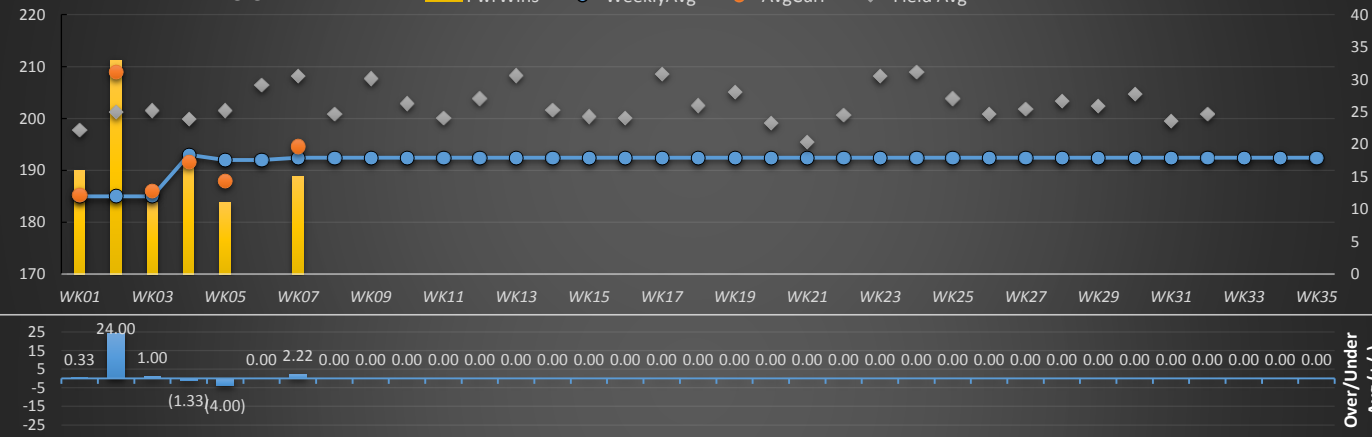
TOP GAMES/SERIES



GAME AVERAGE

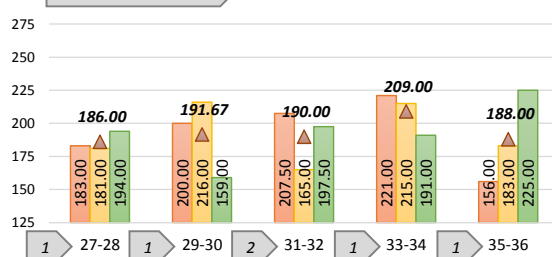


WEEKLY ANALYSIS



Last 5 Wks	Avg	Game 1	Game 2	Game 3	Series	Avg +/-	Change	AvgDiff	#OverAvg	PwrWins	Sch/Hdcp	Lane	GM Trend
WK28	192.44						↑ 0.00				/		→
WK29	192.44						↑ 0.00				/		→
WK30	192.44						↑ 0.00				/		→
WK31	192.44						↑ 0.00				/		→
WK32	192.44						↑ 0.00				/		→
Avg (5WK)	192.44						↑ 0.00						→
vs. Current	△ 0.65	#VALUE!	#VALUE!	#VALUE!	#VALUE!	#VALUE!	△ 0.65	#VALUE!	#VALUE!	#VALUE!			→

LANE PERFORMANCE



WK32 Current Week = WK32

*Week#	*Game1	*Game2	*Game3	*Series(S)	*AvgCurr	*AvgUsed	*+/- Avg	*AvgDiff	*GmsOver	*Pwr(S)	*Pwr(H)	*Place(S)	*Place(H)	(S) / (H)	*Lane	Pair	FieldAvg	AvgChg	RANK
WK01	202	163	191	556	185.33	185.00	▲ 0.33	(12.44)	2	8	16	28	20	28 / 20	31	31-32	197.77		6
WK02	221	215	191	627	209.00	185.00	▲ 24.00	7.67	3	26	33	13	6	13 / 6	33	33-34	201.33	-	1
WK03	183	181	194	558	186.00	185.00	▲ 1.00	(15.56)	1	9	11	28	26	28 / 26	28	27-28	201.56	-	5
WK04	200	216	159	575	191.67	193.00	▼ (1.33)	(8.29)	2	14	17	24	21	24 / 21	29	29-30	199.96	▲ 8.00	3
WK05	156	183	225	564	188.00	192.00	▼ (4.00)	(13.54)	1	9	11	28	26	28 / 26	35	35-36	201.54	(1.00)	4
WK06						192.00								/			206.45	-	
WK07	213	167	204	584	194.67	192.44	▲ 2.22	(13.55)	2	11	15	27	23	27 / 23	32	31-32	208.22	▲ 0.44	2
WK08						192.44								/			200.92	-	
WK09						192.44								/			207.72	-	
WK10						192.44								/			202.91	-	
WK11						192.44								/			200.12	-	
WK12						192.44								/			203.89	-	
WK13						192.44								/			208.36	-	
WK14						192.44								/			201.66	-	
WK15						192.44								/			200.35	-	
WK16						192.44								/			200.14	-	
WK17						192.44								/			208.59	-	
WK18						192.44								/			202.54	-	
WK19						192.44								/			205.09	-	
WK20						192.44								/			199.15	-	
WK21						192.44								/			195.40	-	
WK22						192.44								/			200.71	-	
WK23						192.44								/			208.12	-	
WK24						192.44								/			209.00	-	
WK25						192.44								/			203.85	-	
WK26						192.44								/			200.92	-	
WK27						192.44								/			201.86	-	
WK28						192.44								/			203.38	-	
WK29						192.44								/			202.38	-	
WK30						192.44								/			204.71	-	
WK31						192.44								/			199.50	-	
WK32						192.44								/			200.83	-	
WK33						192.44								/				-	
WK34						192.44								/				-	
WK35						192.44								/				-	
Average	195.83	187.50	194.00	577.33	192.44	191.80	3.70	(9.28)	1.83	12.83	17.17	24.67	20.33	24 / 20	32.00		202.78	(0.65)	

GamesOver%= 61.11% PwrWin%= 45.45%

Game by Game, Pair by Pair

	High	Low	Avg	Last 5	27-28	29-30	31-32	33-34	35-36
Game 1	221.00	156.00	195.83		183.00	200.00	207.50	221.00	156.00
Game 2	216.00	163.00	187.50		181.00	216.00	165.00	215.00	183.00
Game 3	225.00	159.00	194.00		194.00	159.00	197.50	191.00	225.00
Average	193.00	185.00	192.44	#VALUE!	186.00	191.67	190.00	209.00	188.00
Bowled					1	1	2	1	1

Top 5 Weeks

Top 5	Games	Series	Week	Game1	Game2	Game3	AvgWk	Average	Field Avg
1st	225	627	WK02	221	215	191	209.00	185.00	201.33
2nd	221	584	WK07	213	167	204	194.67	192.44	208.22
3rd	216	575	WK04	200	216	159	191.67	193.00	199.96
4th	215	564	WK05	156	183	225	188.00	192.00	201.54
5th	213	558	WK03	183	181	194	186.00	185.00	201.56

Top Finishes

Finishes	Scratch	Handicap
1st	0	0
Top 5	0	0
Top 10	0	1
Top 15	1	1

Last 5 Weeks

WK	Scratch	Hdcp
WK28	#VALUE!	#VALUE!
WK29	#VALUE!	#VALUE!
WK30	#VALUE!	#VALUE!
WK31	#VALUE!	#VALUE!
WK32	#VALUE!	#VALUE!
5 wk avg	#DIV/0!	#DIV/0!
Current	24	20
Difference	#DIV/0!	#DIV/0!

Bowler of the Year

Criteria#	Points	Totals
POY 1	77	Total Pts 239.5
POY 2	103	Behind -2403
POY 3	52.5	POY Rank 47
POY 4	1	
POY 5	6	